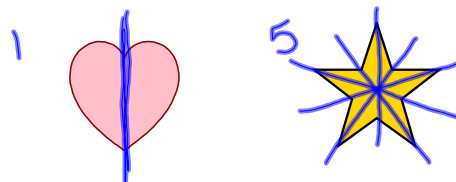


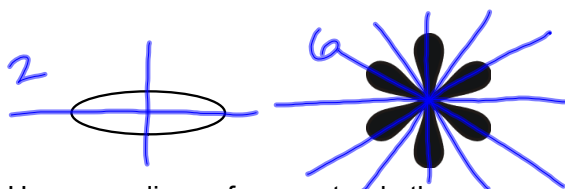
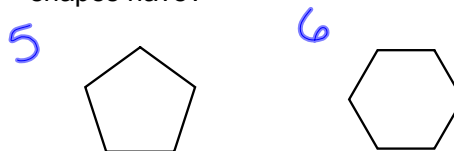
9.6 Identify Symmetry

line symmetry--if a figure can be mapped onto itself by a reflection in a line (known as the line of symmetry)

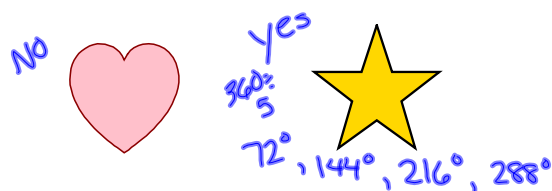
rotational symmetry--if a figure can be mapped onto itself by a rotation of 180° or less about the center of the figure (known as the center of symmetry)



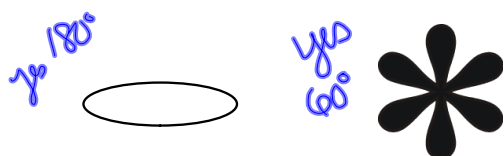
How many lines of symmetry do these shapes have?



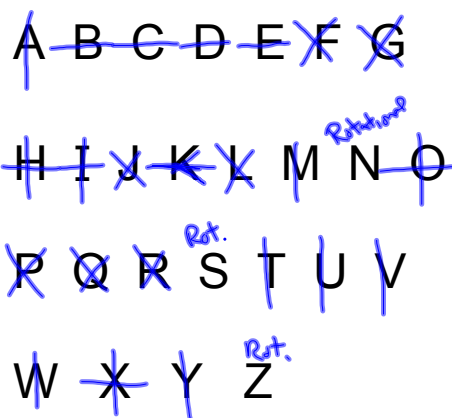
How many lines of symmetry do these shapes have?



Do these shapes have rotational symmetry?



Do these shapes have rotational symmetry?



Words with symmetry

WOW
MOM
BIB
~~HOOK~~

~~OBOE~~
DECIDE
ATOYOTA

EE 199